

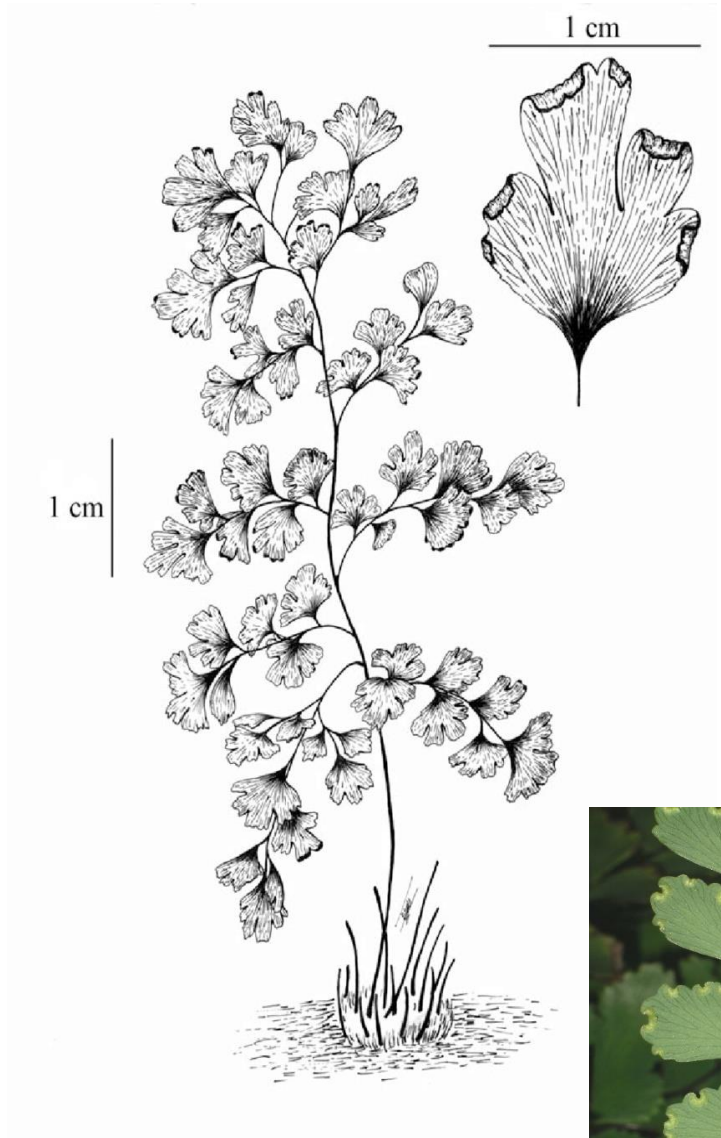
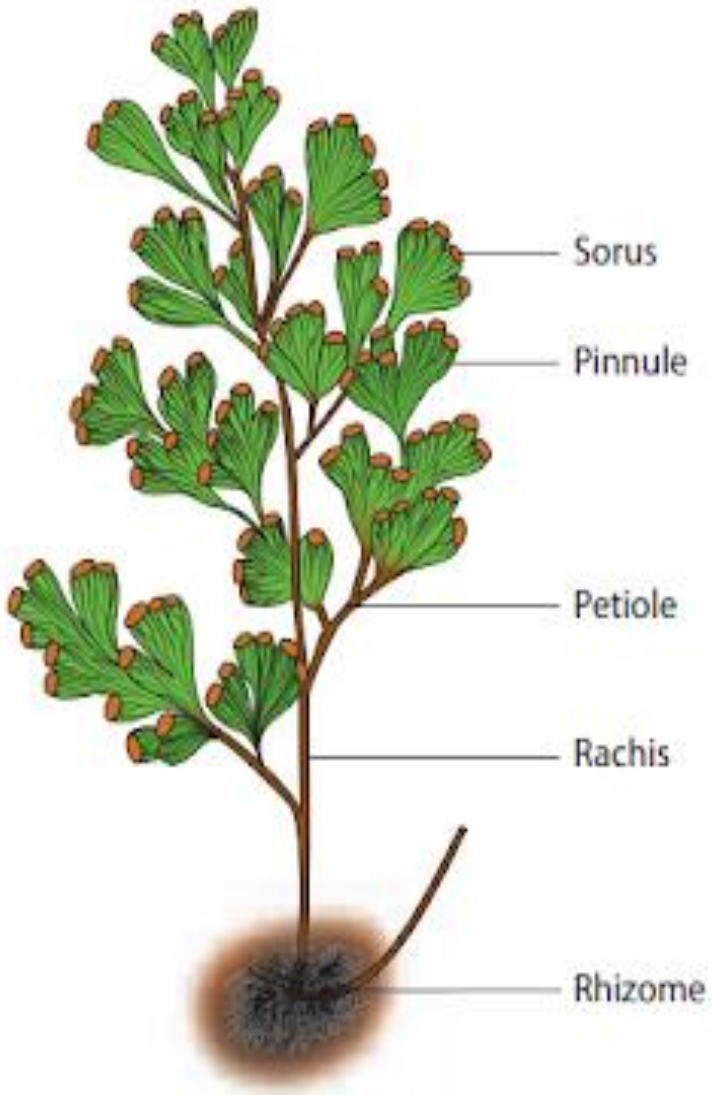
ADIANTUM

Dr. Neeraja Tutakne



Dr. Neeraja Tutakne, Asst. Prof. Botany,
SIES College (Autonomous), Sion (West)

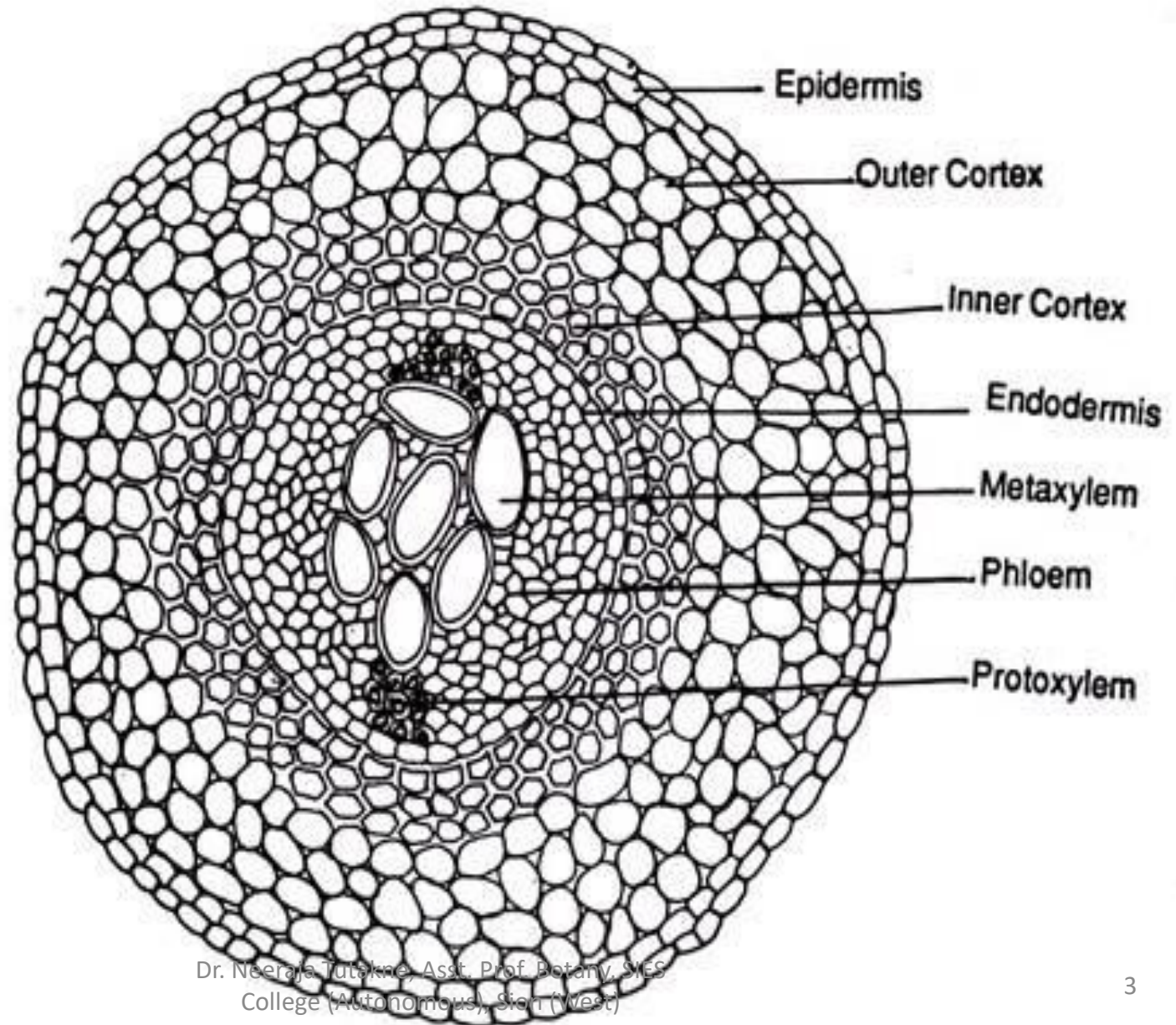
EXTERNAL MORPHOLOGY OF SPOROPHYTE



Dr. Neeraja Tutakne, Asst. Prof. Botany, SIES College (Autonomous), Sion (West)

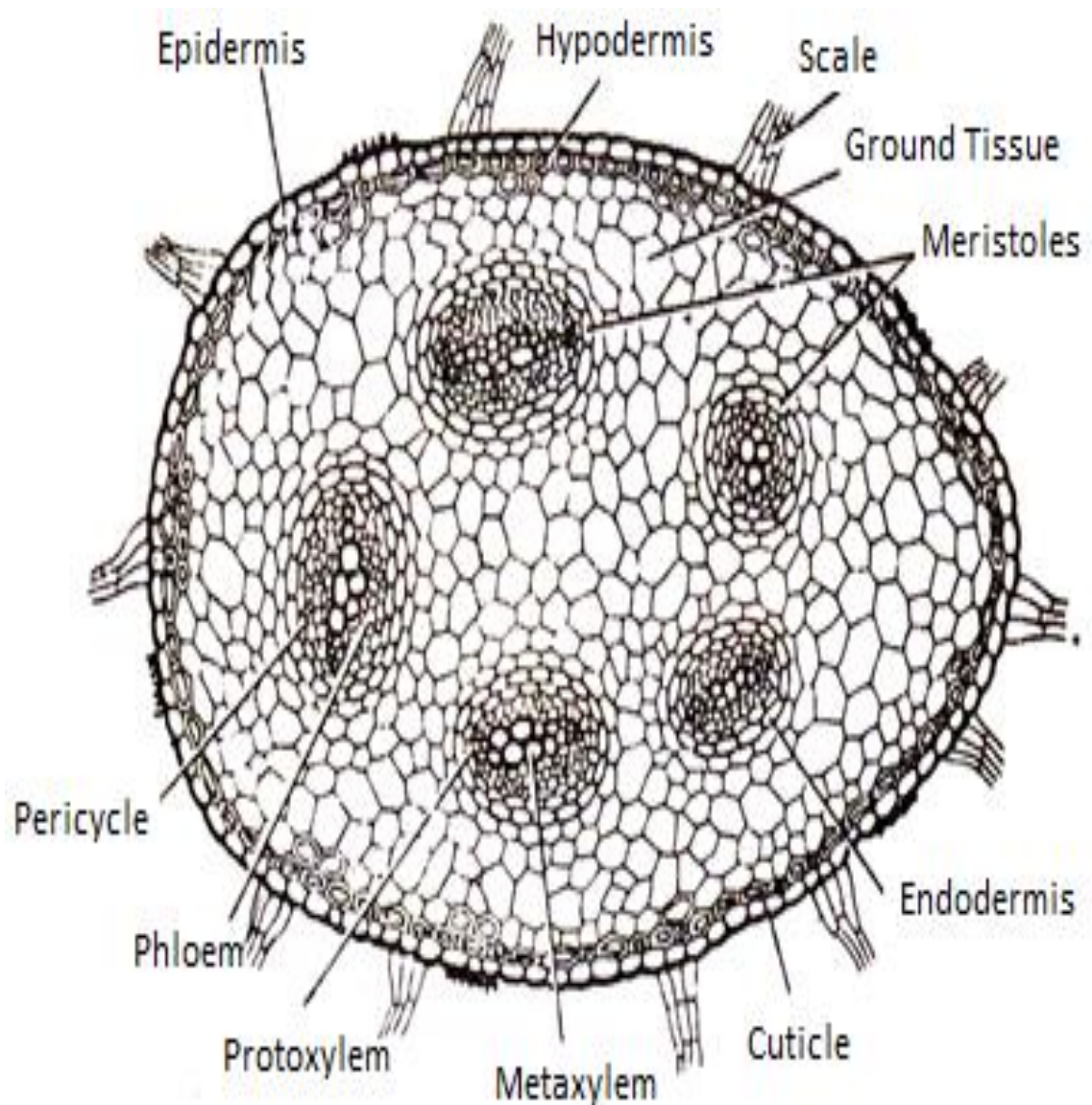
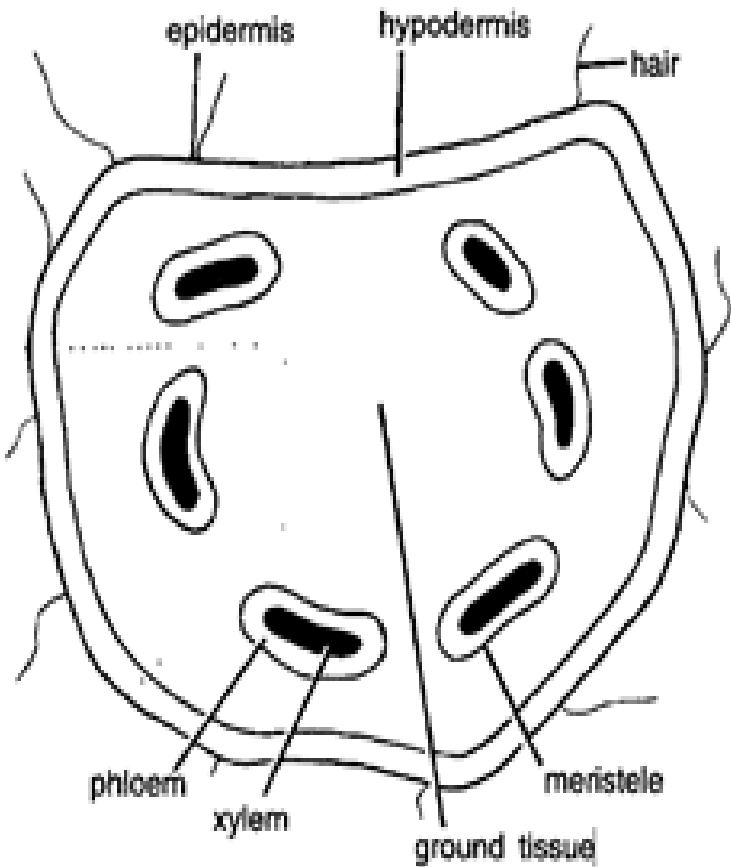
INTERNAL MORPHOLOGY OF SPOROPHYTE

T.S. OF ROOT



INTERNAL MORPHOLOGY OF SPOROPHYTE

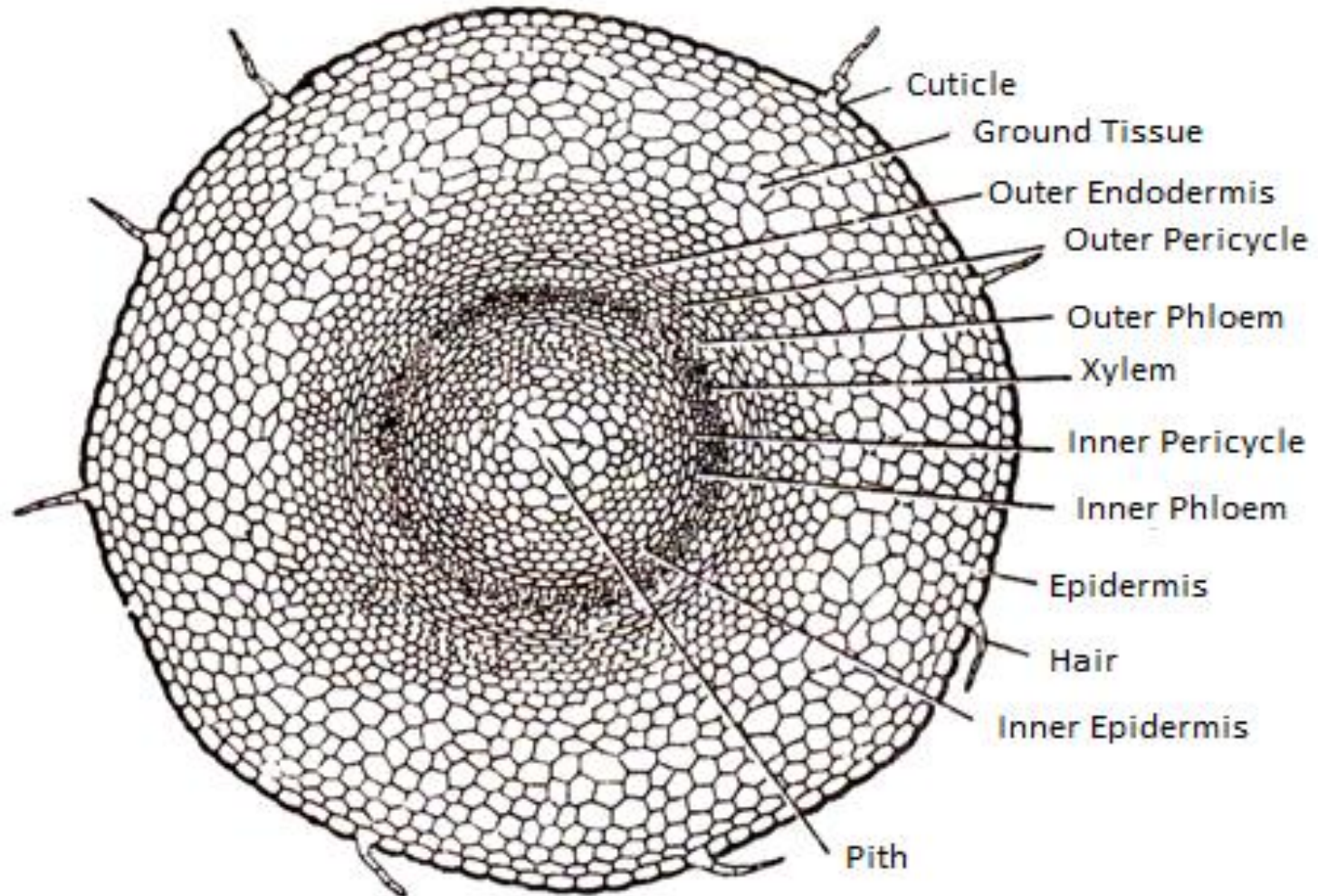
T.S. OF RHIZOME (showing disctyostele)



INTERNAL MORPHOLOGY OF SPOROPHYTE

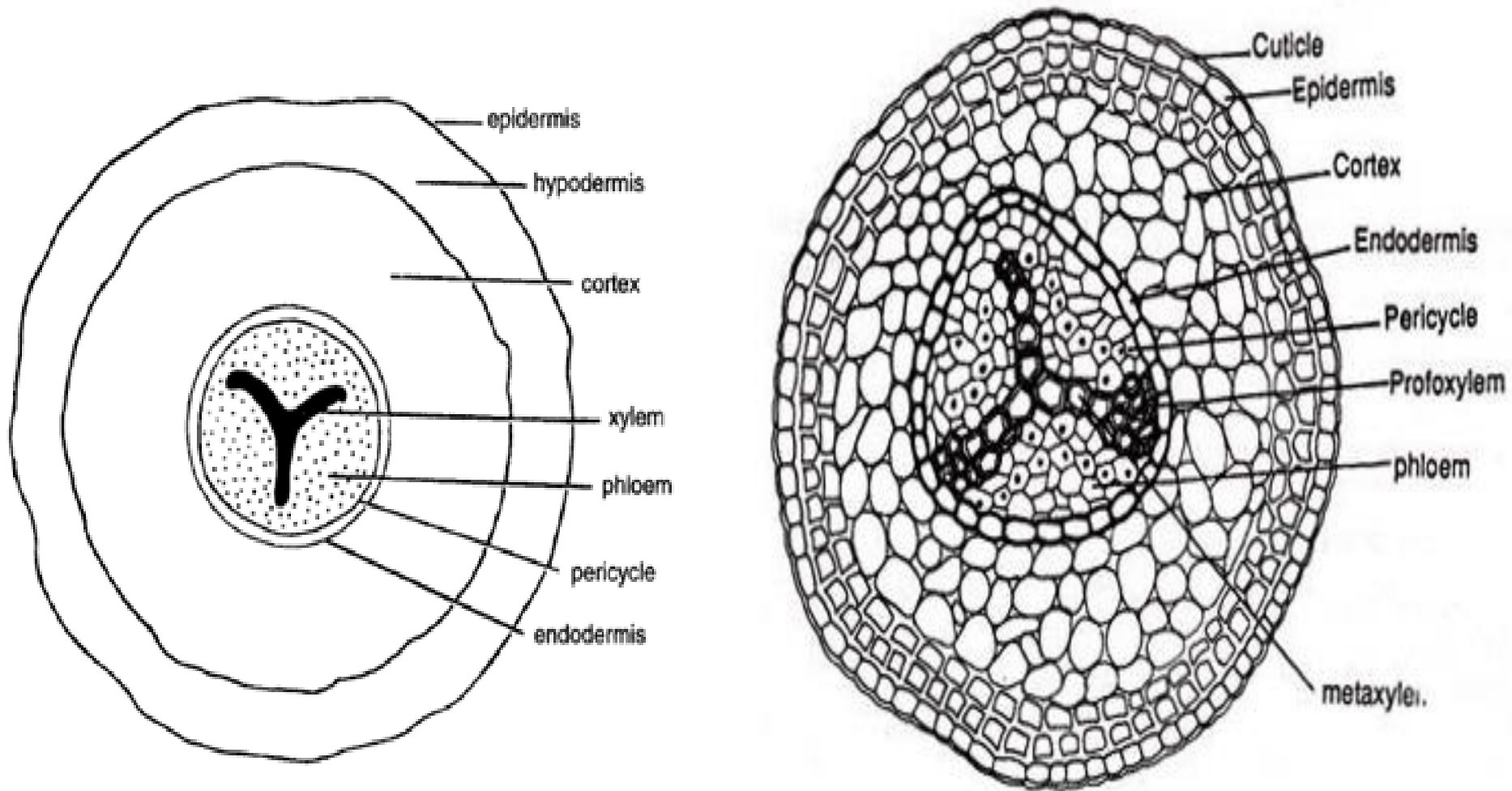
T.S. OF RHIZOME

(showing amphiphloic siphonostele)



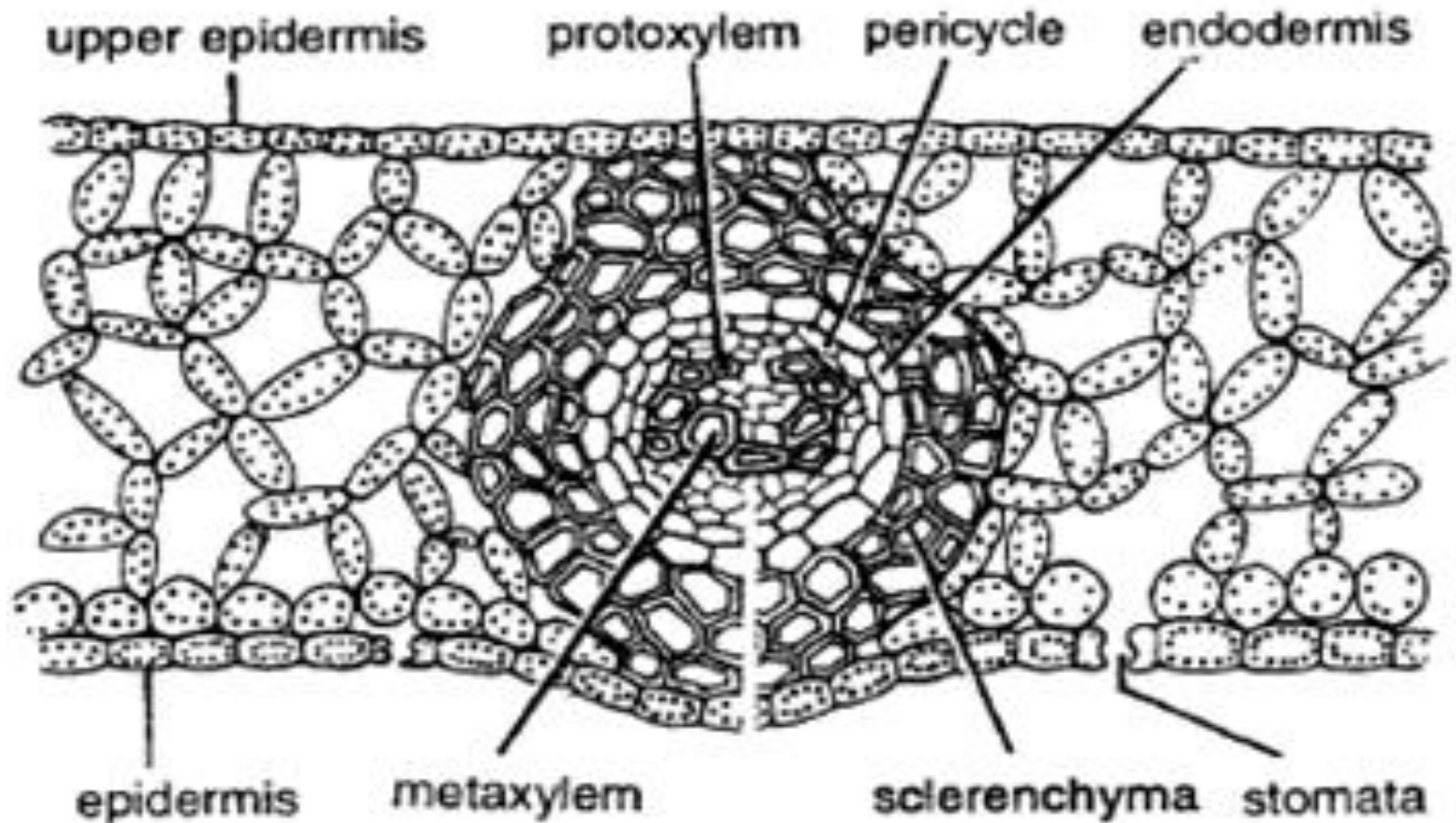
INTERNAL MORPHOLOGY OF SPOROPHYTE

T.S. OF RACHIS



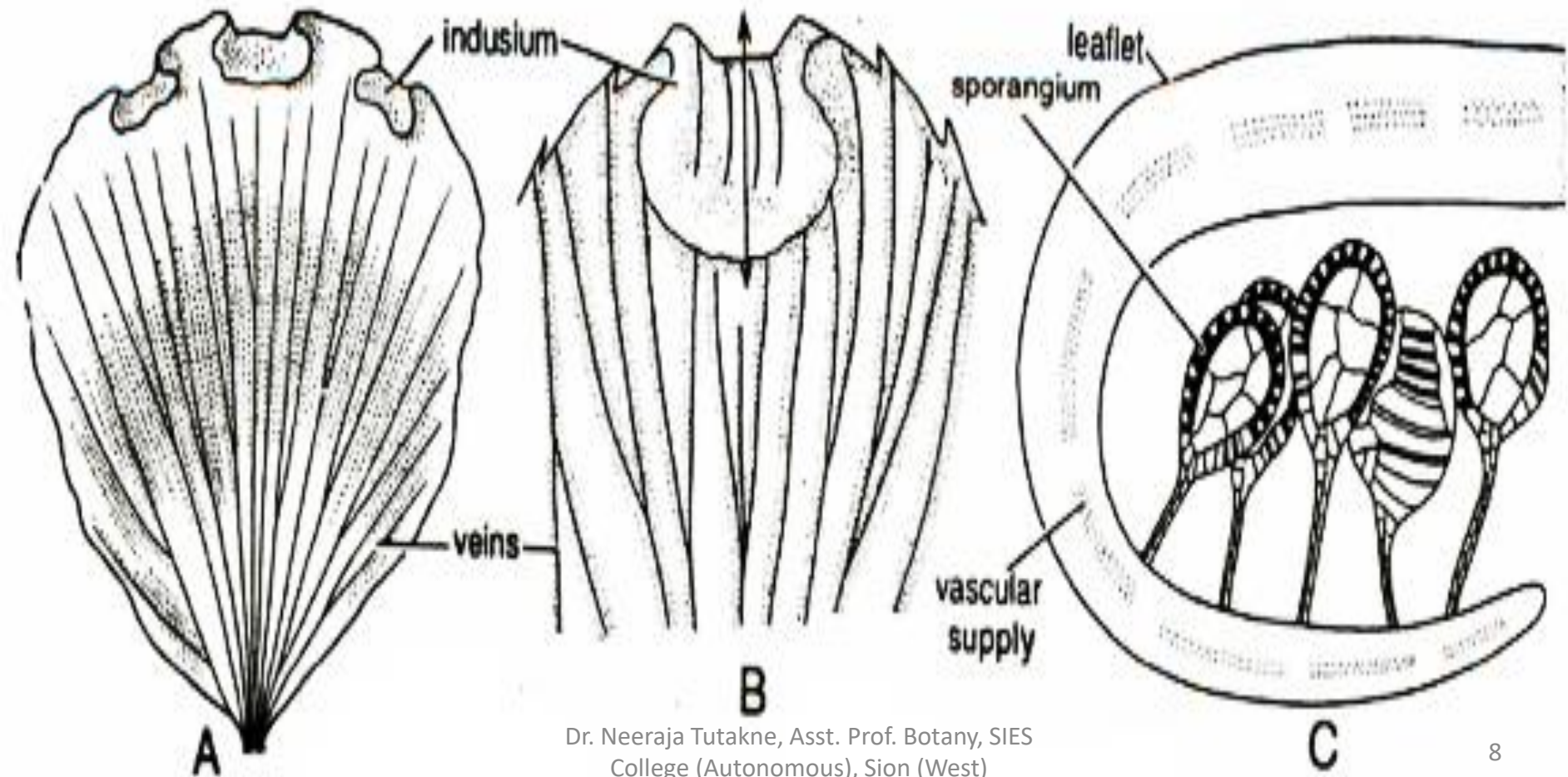
INTERNAL MORPHOLOGY OF SPOROPHYTE

T.S. OF LEAFLET

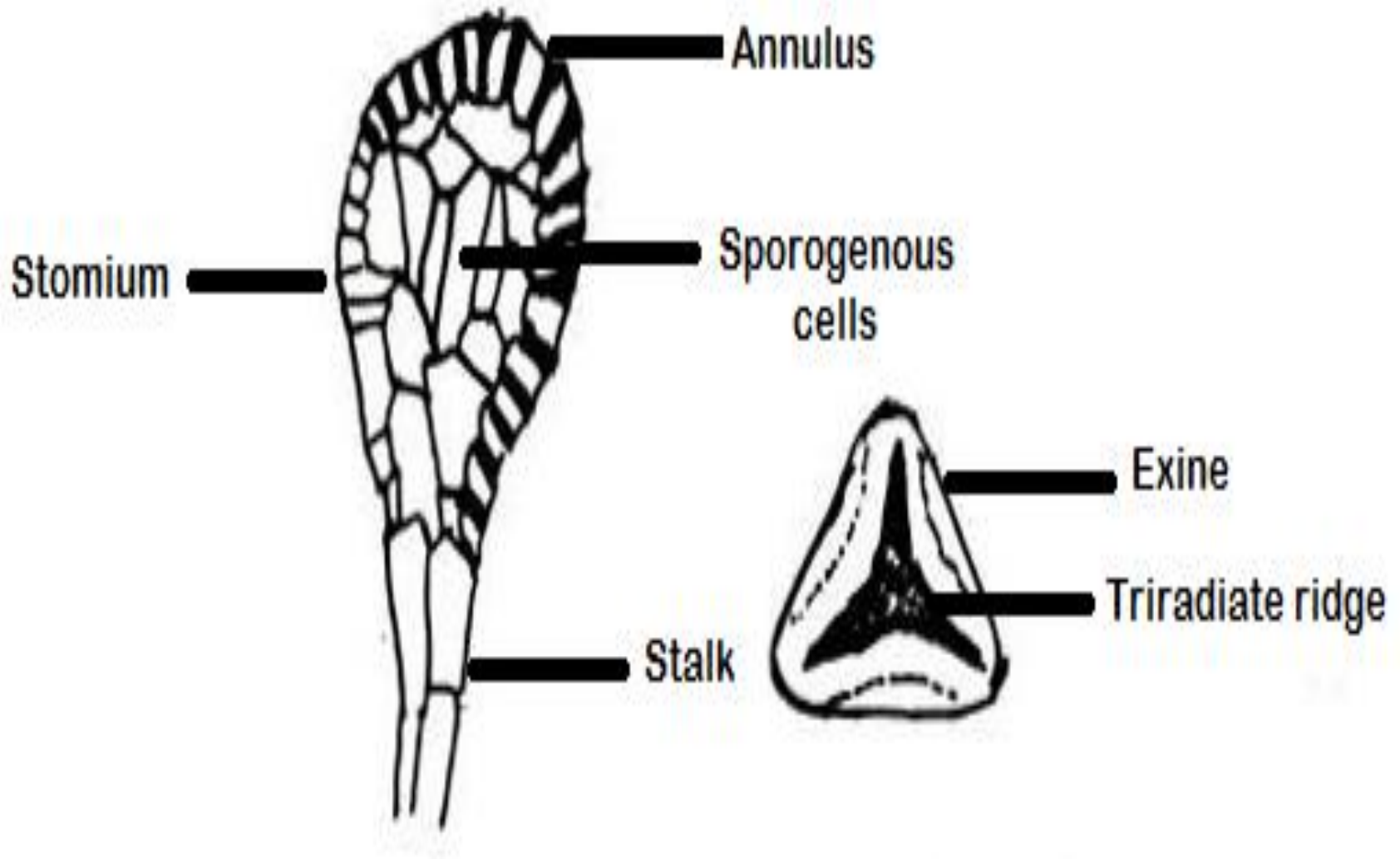


REPRODUCTION

- **Vegetative:** Leaf tip buds – Walking fern
- **Asexual:** Sorus



Asexual Reproduction – Sorus & Spores



Sex Organs – Male & Female

